



# ROYAL PALACE



- ACCESS TO SR 528 EXPRESSWAY
- 10 MINUTES FROM DOWNTOWN ORLANDO
- 15 MINUTES FROM DISNEY THEME PARKS
- 5 MINUTES FROM ORLANDO INTERNATIONAL AIRPORT

[www.royalpalaceorlando.com](http://www.royalpalaceorlando.com)



# ROYAL PALACE

# RESIDENCES



ROYAL PALACE is a complex located in the city of Orlando, Florida, composed of 120 residences of 1 and 2 bedrooms + den.

With a sophisticated design ROYAL PALACE will inspire you to live and enjoy with a touch of romance and art.

## RESIDENCE FEATURES:

- Innovative architectural design, bring forth open areas that are both efficient and functional, with high luminosity.
- 9 ft ceilings (2.74 m).
- Italian inspired kitchen designs, granite countertops, and stainless steel appliances with low consumption.
- Large walk-in closets in each bedroom.
- Bathrooms with exclusive cabinets and finishes, with ample mirrors and accessories.





## BUILDING AMENITIES & COMMON AREAS:

- Security system with remote access.
- High efficiency and technology construction.
- Resort style pool with wooden decks and gazebo.
- Zen garden for mediation
- Professionally decorated event room
- Exclusive Fitness Center with cutting-edge equipment and cardio machines.
- Kid's Club – are for games and playing.



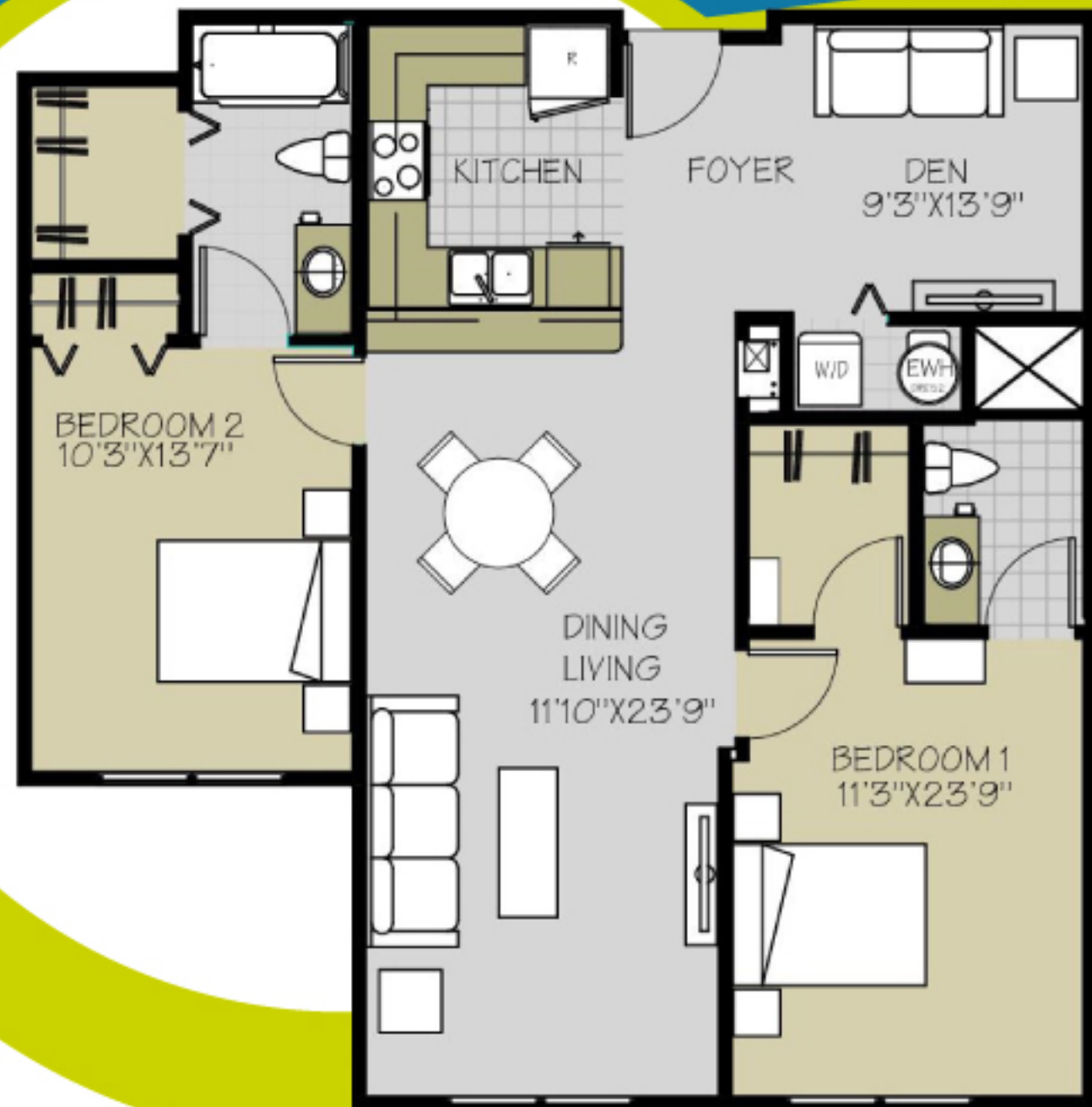


# ROYAL PALACE

# FLOORPLANS

## UNIT A

(1,081 sf) (100.4 m<sup>2</sup>)  
2 bedrooms 2 baths + Den

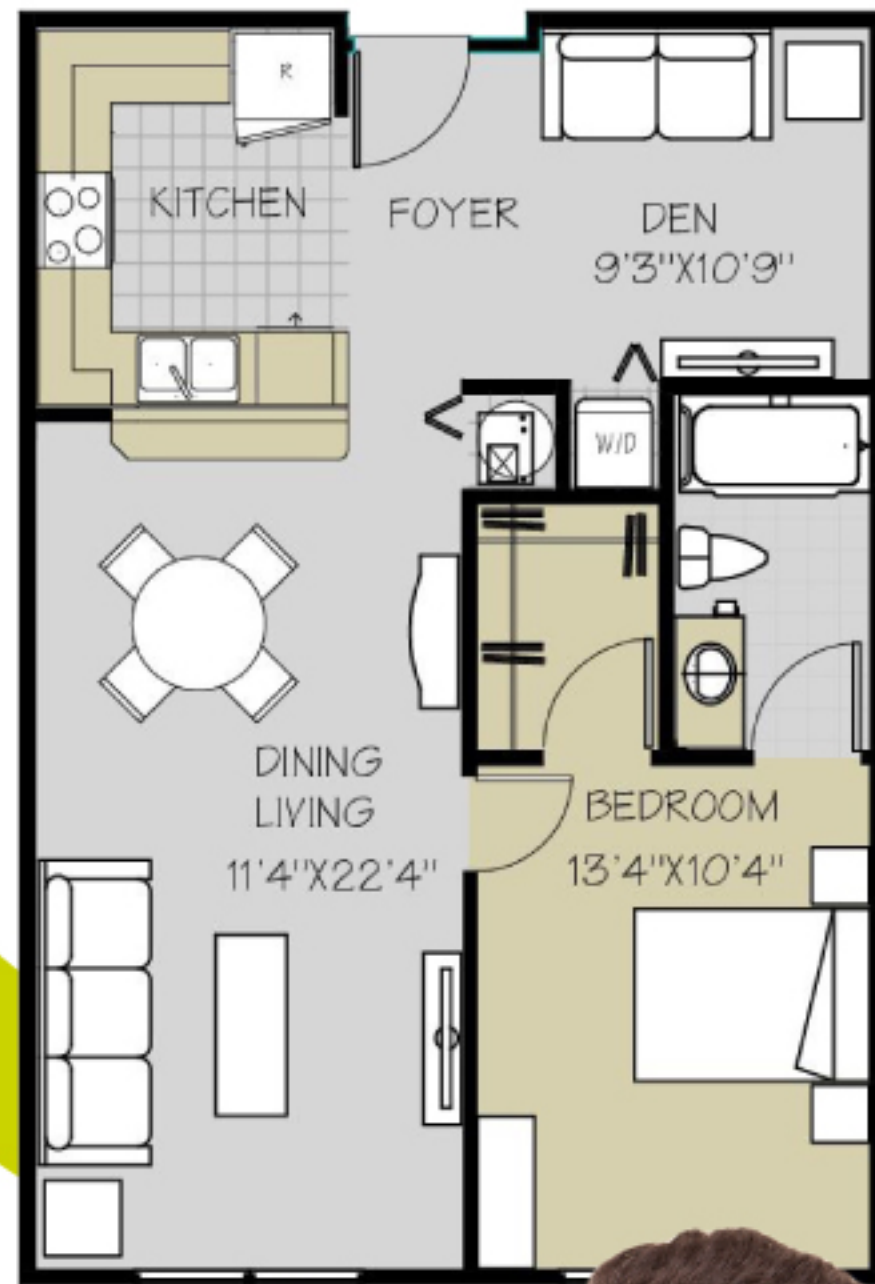


## SITE PLAN



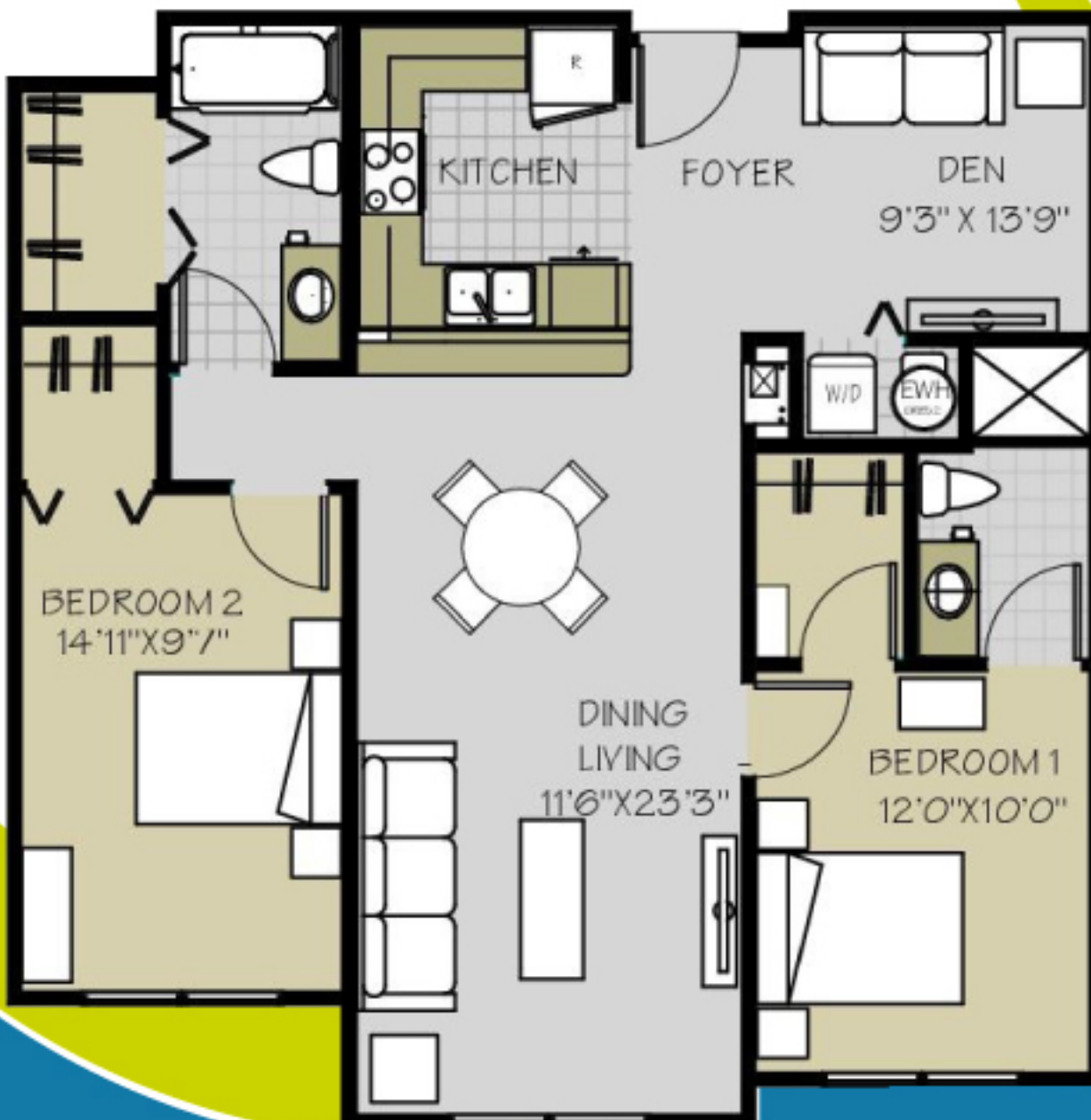
## UNIT C

(756 sf) (70.2 m<sup>2</sup>)  
1 bedroom 1 bath + Den



## UNIT B

(1,030 sf) (95.7 m<sup>2</sup>)  
2 bedroom 2 bath + Den





# ALL ABOARD FLORIDA THE BRIGHTLINE

THE \$2.5 BILLION PRIVATELY FUNDED PROJECT WILL HAVE TRAINS TRAVELING UP TO 125 MILES PER HOUR BETWEEN MIAMI, FORT LAUDERDALE, WEST PALM BEACH AND ORLANDO. THE THREE SOUTH FLORIDA STATIONS ARE CURRENTLY

UNDER CONSTRUCTION, AND RAIL TRACK IMPROVEMENTS ARE UNDERWAY.

The Miami-Fort Lauderdale-West Palm Beach service is expected to start in mid-2017, with the connection to Orlando opening in late 2017. The Brightline is promising trips of less than 30 minutes from Miami to Fort Lauderdale, under 60 minutes from Miami to West Palm Beach, and about three hours from Miami to Orlando.

## THE FLORIDA MALL

CENTRAL FLORIDA'S MOST DYNAMIC SHOPPING DESTINATION.

Located minutes from Orlando International Airport, THE FLORIDA MALL is the largest and most diverse shopping destination in central Florida.

With more than 20 million visitors per year, and more than 250 exclusive stores, entertainment and dining options. Its dining pavilion offers a total of 23 restaurants, 5 of which are new to the market.







## LAKE NONA MEDICAL CITY

### FACILITIES OF BIO INVESTIGATION AND EDUCATION

This 650 acre center of health and sciences, known as LAKE NONA MEDICAL CITY, is a landmark in Orlando that represents the strategy of creating a specialized focus in medical treatments, investigation and education in central Florida.

Based on the proven theory that a proximity of a cluster formed by health and biological science centers accelerate innovation.

In the last 7 years, LAKE NONA MEDICAL CITY has become the home of some of the most renowned professionals.

## ORLANDO INTERNATIONAL AIRPORT

ORLANDO'S AVIATION AUTHORITY HAS COMPLETED AN IMPROVEMENT PLAN FOR ITS AIRPORT FOR \$1.1 BILLION.

With a capacity of 45 million flyers annually. The new South Terminal, will stimulate the general economy of central Florida.

The new connector will not only improve the infrastructure of the region's transportation, but will also provide ease to the growing number of travelers.

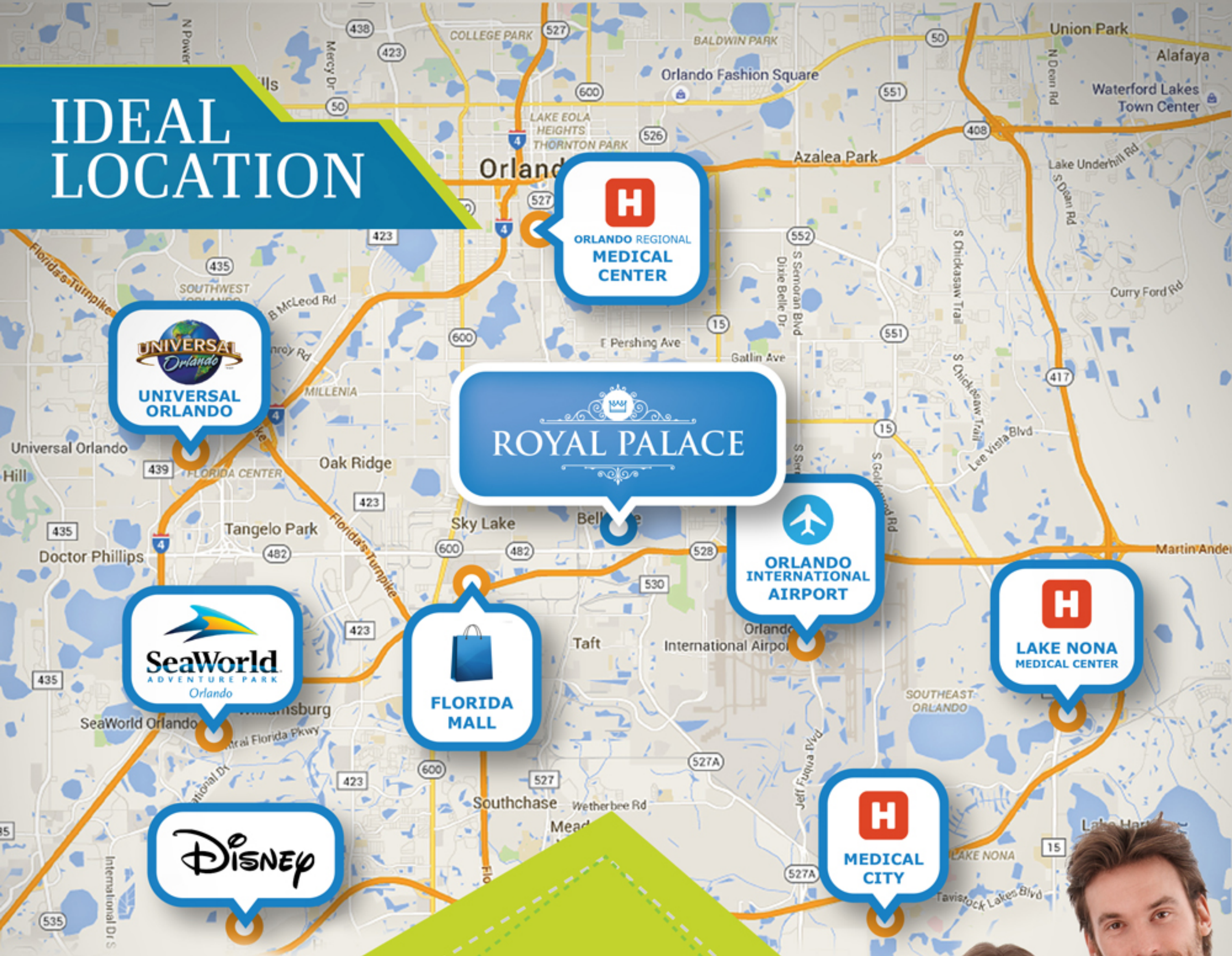
The extension of the travel system of passengers towards the South, construction of a new transportation system/garage and new travel installations to accommodate train passengers.

Improvements to customs areas and border patrol to the U.S. as well as upgrades to ticket receptions in the North terminal and baggage system.





# IDEAL LOCATION



## ROYAL PALACE

ROYAL PALACE is strategically located minutes from these landmarks:

- International Drive Orlando Convention Center • Airport
- Shopping Malls: Florida Mall, Millenia Mall • Restaurants



18851 NE 29th Ave - Suite 402 | Aventura Florida USA - 33180  
Tel: +1 (305) 932-0122 | Fax: +1 (305) 932-8522

### Phones from Argentina:

Direct from Bs. Aires (local line): (011)5129-6870  
Direct from Tucumán (local line): (0381)408-1946  
Direct from Córdoba (local line): (0351) 569-4208